

NEWSLETTER

WAPPENBURY EATHORPE WESTON HUNNINGHAM



APRIL 2016 DIARY

Tuesday 5 April	Hunningham Church Annual Mtg 7.30pm
Saturday 9 April	LADY IN THE VAN Weston Cinema 8pm
Tuesday 12 April	Eathorpe Coffee Morning 10.30-12
Thursday 14 April	Weston Book Club, Weston church 3.30pm
Wednesday 20 April	Aire Flamenco Eathorpe Village Hall 8pm
Friday 22 April	Hunningham Parish Meeting 7.30pm

11-12 JUNE

Hunningham Open Gardens

25 JUNE

Weston Village Fete

EDITORIAL

Some great events coming up in our villages, film shows, concerts and summer events just round the corner. Read on to find out more.....

Editor: Katie Alcock 634779 oxfordflutes@yahoo.co.uk

Advertising manager: Moira Rawlings 634766 moirarawlings@btinternet.com

Newsletter Subscriptions

Thanks to all those who have paid £5 to cover the printing costs for the ten issues for the year. The £165 received so far covers 33 houses of the 350 distribution, just the cost of printing one edition. We do have reserves built up in previous years but these will last only about a year. The income from advertisements is simply not enough.

We do need more subscriptions if we are to continue. The survey carried out last year revealed that many people, even those with internet access, prefer to receive a paper copy "to read whilst they are having a coffee"! Some people, of course, do not have a computer.

Please send your subscriptions, either cash or cheque, to any of the following, with the completed slip below. We really want to continue providing the service which so many have said they like!

PS Articles for inclusion welcome! Keep them coming, please!

Eathorpe / Wappenbury: Jill Wheeler, The Mill House, Eathorpe

Hunningham: Moira Rawlings, 3 Elm Farm Cottages, Hunningham

Weston under Wetherley: Robert Birkmyre, Martins Hatch, Rugby Road, Weston

Robert Birkmyre

Name.....

Address.....

email (optional).....

Amount enclosed £.....or cheque made out to "The Hunningham Magazine"

VILLAGE EVENTS - EATHORPE

Synergy presents...

AIRE FLAMENCO

GLENN DAVID PHILIPS

JUAN CASALS MENDOZA

Vibrant guitar and voice duo from Spain, bringing you the passion and drama of Flamenco in a mix of Latin based songs & instrumentals

PLAYING LIVE at

Eathorpe Village Hall

Wednesday 20 April 8pm

£9.50 (adults) or £8.50 (65+ or U-18) purchased by 13/4

£11 (adults) or £10 (65+ or U-18) purchased after 13/4

Tickets available from 01926 632027 / 01926 632664

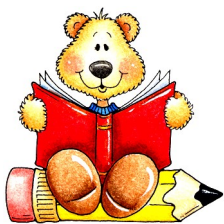
suzanne.goddard1@gmail.com

Licensed bar open from 7.30pm/light snacks available to purchase at interval

<http://www.aireflamenco.co.uk>



VILLAGE NEWS - WESTON



WESTON TODDLERS - FRIDAYS

Weston Tots & Babies runs every Friday 9.30am - 11.15am during term time. The entrance fee is £2 and this includes a snack. We have lots of different toys, a dedicated space for babies, craft activities and always enjoy a group singalong at the end of each session.

There is a health visitor clinic once a month for those

who have babies or any concerns with their toddlers.

The group has lots of regulars with many new faces appearing all the time. If you live in the village and have a baby or toddler please consider coming along and joining in - we would love to see you!



DATES FOR YOUR DIARIES:

Friday 1st April: EASTER - NO TODDLERS

Friday 8th April: Demonstration session by 'Rhythm Time' 9.30 - 10.00

Friday 15th April: Health Visitor Drop in clinic 9.30 - 10.30

MONDAY CLUB

We welcomed members of the Offchurch Monday Club to our meeting at Weston Village Hall in March. Our speaker was Revd Steve Tash from Alcester who gave a talk and presentation on Farm Africa. The whole essence of this Charity is to encourage self-sufficiency in East Africa and to teach better husbandry. They are able to provide chickens, goats, bees and a variety of seed crops suitable for arid conditions. His enthusiasm and details of many successful projects were much appreciated. The Club were pleased to make a donation to this Charity before we enjoyed tea and cakes.

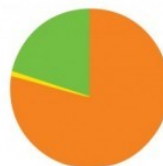


Valerie Evans



85% of Farm Africa's expenditure in 2014 was spent on charitable activities.

■ Charitable activities
■ Generating funds
■ Governance



VILLAGE NEWS - EATHORPE

EATHORPE

Eathorpe Coffee Morning will be held on Tuesday, April 12th in the village hall, from 10.30 -12o'clock. Please join us, everyone welcome.

Jill Wheeler



Jill & John Wheeler would like to thank all our neighbours for their help and support during the recent flood. For the phone calls, visits etc, and "work" on the night. It was most reassuring to know everyone was watching out for us.

WESTON BOOK CLUB

Weston Book Club meet in the church vestry once a month, usually on a Thursday afternoon. We get together to chat about our chosen book and to enjoy a cuppa and (most importantly) a slice or two of cake, of course.

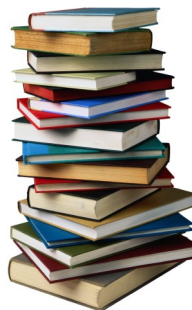
If you enjoy reading, and would like to try out some books that you may not normally read, including well-known authors and classics, feel free to join us. We each try to suggest books that we feel the others would enjoy.

This month we are reading ***The anchoress of Shere*** by Paul Morecraft.

Our next meeting is on 14th April at 3.30pm (normally we meet at 2pm). Feel free to pop along and find out what we are about.

If you are looking for a good holiday read, or looking for inspiration don't forget that there is a wonderfully stocked library of good quality books in the church.

**For more information call Karen Robbins
07767 673239**



VILLAGE NEWS - HUNNINGHAM

NOTICE OF PARISH OF HUNNINGHAM MEETING

Notice is hereby given that a Parish Meeting for the Parish of Hunningham will be held at: The Parish Room, Hunningham Church on
Friday April 22nd 2016 at 7:30pm

The following matters have so far been placed on the agenda:

- Apologies
- Election of officers
- Minutes of Parish Meeting for 2015
- Matters arising
- Report on the activities of the Joint Parish Council
- Parish Room report
- Any other business

All electors of the Parish are invited to attend and take part in the proceedings.

M E Green, Chairman of the Parish Council

VILLAGE DEFIBRILLATOR

Arrangements are currently in hand for a defibrillator to be located within Hunningham village. Details of the actual location will be publicised once it is in place. In the meantime, the supplier of the defibrillator has offered to come and give a demonstration on its use. If you would like to attend the demonstration, please contact **Margaret Green on 01926 632903**.



HUNNINGHAM CHURCH Annual Meeting in The Parish Room
Tuesday April 5th at 7.30pm

If you would like to know how things are progressing at Hunningham Church and the changes Coventry Diocese are making – please come along on **TUESDAY 5th April at 7.30pm** and we will be reviewing the year. It would be good to see you.

Hazel Taylor

VILLAGE NEWS - HUNNINGHAM

WELCOME TO HUNNINGHAM to Ingrid, Wim, Lisa and Cat who have come to live in Moat Cottage. We hope that they will feel welcome and have a happy time in our village.



REPLASTERING THE CEILING in THE PARISH ROOM

Hunningham Church –

The replastering of the ceiling in the Parish Room has been completed and is now safe and secure.

RED LION PUB – we are sad to see that due to flooding the pub has had to close for 4 weeks. We wish them well in getting everything dried out and replaced.

DATE FOR THE DIARY:SATURDAY 14th MAY – If you can spare an hour to help us spring clean Hunningham Church AND get the Graveyard looking good, please come and help us. We need to get it ready for Open Gardens in June.

Hazel Taylor



WESTON CINEMA

THE LADY IN THE VAN

WESTON UNDER WETHERLEY VILLAGE HALL (CV33 9GA)

Saturday 09 April 8pm £6

Tickets available from ticketsource.co.uk/westoncinema;

Gordon MacDonald: westoncinema@gmail.com;

Jeff & Jenny Arnold: 01926 632330 or Robert & Trudy Birkmyre: 01926 632680

or birkmyremh@hotmail.co.uk

BigPictureShow.org.uk

LIVE & LOCAL **BFI** Film Forever



Sponsored by
The National Lottery

NEIGHBOURHOOD WATCH



After a couple of months without many incidents to report, I have, in the past few days received news of garage and shed break-ins in both Eathorpe and Hunningham. It is apparent that thieves are targeting power tools and gardening equipment. This is an activity that has happened before, so it behoves us all to do what we can to make sure that such storage sheds are made as secure as possible. Details of the incidents are taken straight from the Police newsletter or email and, as you will see, the thieves had two bites of the cherry at Eathorpe:

Eathorpe - Garage Burglary - Crime Reference: 23S5/7383Z/16

Between 0000hrs and 0715hrs Tuesday 08-MAR-2016 unknown offender (s) forced entry into a garage located at the block of garages on Main Street. Offender(s) stole a number of power tools.

Eathorpe - Garage Burglary - Crime Reference: 23S5/7588X/16

In addition to the first report, a further two garages have been targeted between 0000hrs and 0715hrs Tuesday 08-MAR-2016. One of the garages was entered. Nothing appears to have been stolen.

Hunningham - Shed Burglary - Crime Reference: 23S5/7740M/16

Between 0830hrs and 1215hrs Friday 11-MAR-2016 unknown offender(s) forced entry into a workshop at the rear of a rural residential property near to School Lane, Hunningham. Unknown offender(s) also forced entry into a secure wooden shed at the rear of the property and stole a petrol lawnmower.

Do you have any relevant information?

Did you see or hear anything?

*Please dial 101 to report any information relating to this offence. Alternatively contact **CRIMESTOPPERS** on 0800 555 1110800 555 111 FREE or visit their website at: <https://crimestoppers-uk.org/> Please quote Crime Reference: **23S5/7740M/16** should you make contact with regards to this incident.*

That's all for this month, but don't forget - To report an incident/crime, dial 101 for non-emergencies and 999 in an emergency. DO NOT report directly to WRE SNT.

Paddy Taylor 632428

CHURCH SERVICES

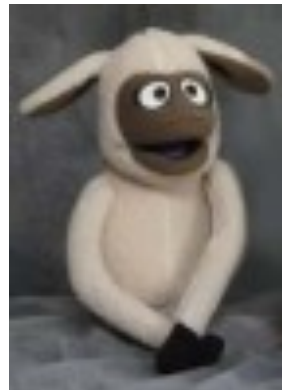
Sunday 3rd April	11am Wappenbury 4pm Hunningham 6.30pm	3 Parishes Morning Service
Sunday 10th April	10am Offchurch 6pm Weston	Holy Communion with Sunday School Evensong
Sunday 17th April	11am Weston	Weston @ Eleven
Sunday 24th April	11am Hunningham	Come2Worship with Junior Church and the Pilgrim Puppets

THE PILGRIM PUPPETS

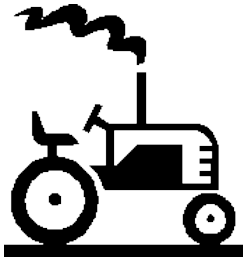
Our Pilgrim Puppets are hoping to visit Care Homes and Schools in April:
Sunday 24th April - Come & Worship 11.00am Hunningham Church

We are on the lookout for NEW RECRUITS to join our PILGRIM PUPPETS, from 9 years upwards. If you are an adult and are interested in helping with props, costumes or our sound system, or also performing you would be VERY welcome. Please ring Hazel Taylor 63248.

We meet at 4.45pm - 6.00pm on a Wednesday evening in Hunningham Parish Room.



FARMER'S DIARY



Remembering how I failed to save a tiny leveret from the persistence of an unruly gang of magpies, imagine my dismay as I watched a pair of magpies building a fortress-like nest about 15 yards from the gun cabinet. I gave them fair warning and they just flew off to the beech tree, from where they laughed down at me no doubt relishing the thought of another egg from the ducks who are nesting under the barbeque.

A glance at the magnificent thrush who they displaced from his perch and flew off no doubt having second thoughts about nesting nearby reminded me of being chided for expressing such thoughts before. "Everything has to live" I was told. Well maybe but the wee beasties spreading disease in Brazil and malaria getting closer to home, not to mention those beasties cursing Scottish picnics are debatable. What about the tsetse fly, warble fly and the grey slug (again!) Roundworms are no fun either.



It prompts the moral question often faced by farmers in this environment we live in. It is not so much Beatrix Potter out there but nature in all its raw and brutal reality. Woodpigeons and rabbits can do little for one's sanity on occasion. So exactly how much "dominion over the birds of the air and the beasts of the field" should one exercise. Well in my experience most farmers use great common sense and know better than most where the balance lays.

We have had surveyors for HS2 checking the watercourses recently, so I was interested to see the Sunday Telegraph suggest HS2 will never run at top speed because the ground is unstable. It is food for thought if we keep having extreme weather events like last week when the oat store flooded for the second time this winter.

FARMER'S DIARY

Surely George Stevenson never envisaged trains running over 200mph down a conventional railtrack. Perhaps the engineers should hold fire and design a safe, new system and condemn the ancient iron rail method to our admittedly glorious past.

The Common Agricultural Policy is coming under scrutiny whilst the debate upon 'Brexit' goes on. Weston Hall Farm like many others was drained in the seventies with the help of a Farm and Horticultural Development Scheme. Eire was transformed agriculturally and now the attention is turned to the agri environment. The money invested is of course returned by the very low price of food compared to say the 1960s. Is it true that if we opt out of the EU our exports will be cut to shreds and will be completely at the mercy of supermarkets who will always buy on price while we will not be able to compete against the subsidised European farmer?

(62% of Agrifood exports and 70% of imports with the EU)



While we were in New Zealand we were told by Richie Macaws' uncle Pete to stand on our own feet (mind you I am not sure Richie stood on his feet when he went for the ball). This will be a year to define agriculture for a long time to come. I have just heard those magpies laughing again. They are very perceptive creatures.

So look out for the Easter Bunny

Mr McGregor from his garden at

Weston Hall Farm



WESTON CINEMA

"A BIZARRE AND FASCINATING TRUE STORY. A TOTAL DELIGHT SO RARE IN MOVIES TODAY.

MAGGIE SMITH GIVES A SPECTACULAR PERFORMANCE."

-Rex Reed, NEW YORK OBSERVER

ACADEMY AWARD WINNER
MAGGIE SMITH

ALEX JENNINGS

THE LADY IN THE VAN

DIRECTED BY NICHOLAS HYTNER

SCREENPLAY BY ALAN BENNETT FROM HIS MEMOIR



WESTON UNDER WETHERLEY VILLAGE HALL (CV33 9GA)

Saturday 09 April 8pm £6

Tickets available from ticketsource.co.uk/westoncinema;

Gordon MacDonald: westoncinema@gmail.com;

Jeff & Jenny Arnold: 01926 632330 or Robert & Trudy Birkmyre: 01926 632680

or birkmyremh@hotmail.co.uk

BigPictureShow.org.uk

LIVE
& LOCAL



in association with
The National Lottery

WEATHER



February was yet another changeable month. It started unsettled with storm Henry which hit the North in particular. Storm Imogen on the other hand brought wind and rain to our area over the 6th and 7th. The weather then turned cooler and drier with frosts. The end of the

month was generally dry, sunny and cold.

This February was another very warm month as far as the average temperature goes. It was 1.5C above the long term average and joins a litany of other high temperatures recorded this winter. The Met Office says our weather has been dominated by the strong El Nino in the South Pacific which has led to our wet, warm and windy winter. I believe in the El Nino effect but the Met Office also states that this spell will be followed by a cold spell. What is cold these days? Where are all the snowdrifts I remember of my earlier years? There were 8 days of measurable rain with the wettest day being the 6th when our parishes received 13.5mm. Despite all this doom and gloom it was slightly sunnier than usual.

The warmest daytime temperature of 15C was reached on 3 occasions. This was amazing as there are days last summer which did not achieve this. The lowest daytime temperature was on the 13th and 17th with 5.5C.

Overnight it was warmest on the 21st with 10.5C and coldest on the 14th and 16th with -5C. There were 8 frosts in February.

Mark Hancock 01926 632197 / 07801424003

FEBRUARY 2016		Long term average	Highest recorded	Lowest recorded
Rainfall	42mm	45.028mm	80.5mm (2007)	6mm (1993)
Average max Daily temp	9.621 C	7.4189C	10.482C (2014)	4.09C (1991)
Average min Daily temp	2C	1.266C	3.661C (2002)	-1.73C (1991)
Monthly Average temp	5.82C	4.34C	6.839C (2014)	1.18C (1991)

HILLTOP FARM



St George's Evening
Saturday 23rd April

Now taking bookings.
Reserve your table today
call 01926 632978

View the menu at hilltopfarmshop.com



[hilltopfarmhunningham](https://www.facebook.com/hilltopfarmhunningham)



[hilltopshop](https://twitter.com/hilltopshop)



[hilltopfarmshop](https://www.instagram.com/hilltopfarmshop)

HILLTOP FARM
**BEER &
CIDER
FESTIVAL**
10-12 JUNE 2016
HILLTOPFARMSHOP.COM/BEERFEST



**LIVE MUSIC
ALL WEEKEND**
.....
HOG ROAST & BBQ
.....
FERRET RACING
SHEEP DOG & DUCK DISPLAYS



[hilltopfarmhunningham](https://www.facebook.com/hilltopfarmhunningham)



[hilltopshop](https://twitter.com/hilltopshop)



[hilltopfarmshop](https://www.instagram.com/hilltopfarmshop)

AIMS[®] ACCOUNTANTS FOR BUSINESS

YOUR OWN BUSINESS?

*Accounting and Taxation Service from
a qualified professional with a keen pricing structure.
All charges agreed in advance.*

*I will come round to you and
there is no charge for first meetings.*

Mike Fairbotham BSc FCA

01926 887878

michaelf@aims.co.uk www.aims.co.uk



Physiotherapy in Hunningham

Spinal, Sport Injuries, Musculo-Skeletal, Orthopaedic

Sonya Austin

MCSP, HPC, GRAD.DIP.PHYS

632 523 or 07973 105 231

Approved by all Insurance Funds, Doctor's Referral not necessary



Eddie Croxall
Painter & Decorator

1 Ellerton Grove
Leamington Spa, CV31 1YN

Tel: 01926 882 420

Mobile: 07778 283 244

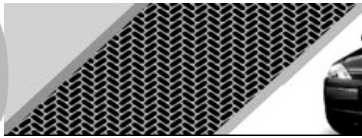




PeterBrooke

Plans drawn for Planning and Building Regulations for New Houses,
House Remodelling, Extensions, Loft Conversions, Renovations.
Free, no obligation, first meeting.

Tel 01926 633691
Mob 07740213572
email peterbr@live.co.uk



APOLLO SCHOOL of MOTORING

Local driving school
27 years experience
Refresher and Intensive courses
Theory test help
Top grade instruction at competitive rates

Call Paul on **01926 632698** or **07771 686078**

www.apolloschoolofmotoring.com



**OFFER FOR LOCAL LANDLORDS!**

BELVOIR LETTINGS Leamington Spa
has swept the board at this year's national Belvoir awards as well as winning Silver for West Midlands Agency of the Year at the National Negotiator Awards 2015!

Led by irrepressible husband and wife team, John and Sue Warburton, the team at the Belvoir office at 22-23 Denby Buildings, on Regent Grove, are celebrating winning a Gold Award for *Franchise of the Year* plus the top award for *Innovation* and a bronze *Group Contribution Award* for work the couple put into raising the profile of Belvoir's network of over 162 UK offices.

As local residents themselves they are right on your doorstep and would like to offer any new landlords from Weston/Hunningham/Eathorpe/Wappenbury **NO START-UP FEE & FREE INVENTORY**. Please contact us:
01926 422251 / leamingtonspa@belvoirlettings.com

Computer Problems? Call Jan Lucas Bubbenhall

System set up
Trouble shooting
Personal tuition (all levels)
02476 307 988 / 07847 015 154
www.bootfinder.co.uk



Websites also undertaken

Flowers for special occasions

Call **01926 429987**
awaywithflowers@btinternet.com



Pamela Gordon 17 Boddington Close Cubbington CV32 7LT

WE WANT YOUR PROPERTY

CALL US TODAY FOR YOUR FREE
VALUATION ON **02476 222 123**



FIND OUR PROPERTIES ON

 **rightmove.co.uk**
The UK's number one property website

Zoopla
Smarter property search



shortland-horne.co.uk





Thoughtspiration!

GHR

Are you suffering from stress?

Change negative thoughts/feelings for positive.

Do you: Suffer from low self esteem or depression? Have any fears or phobias?

Suffer anxiety or panic attacks? Wish you could change your attitude to life?

Want to sleep better? Have little or no will power and wish you had more?

I may be able to help with such problems, using a variety of gentle counselling, talking therapies, hypnotherapy, rewind techniques or recursive brainworking™, in a totally relaxing confidential environment.

Please ring Pippa Jamie DipHYP(ETUK) GQHP on **07775 830987**, or send an email to thoughtspiration@therapist.net for a free, no obligation, initial consultation or just to find out more (based in Weston-under-Wetherley).

Member of the National General Hypnotherapy Register

GHR qualified recursive brainworking therapist

Commercial & Domestic Tree Surgeons

All aspects of tree and hedge work
carried out to industry standards

Tree Removal

Fruit Tree Pruning

Crown Reduction & Shaping

Hedge Trimming & Reduction

Crown Thinning

Tree Planting



All work carried out to BS 3998
Full Public Liability Insurance
NPTC Certified & FdSc Qualified

Chris Eastaff
FdSc Arboriculture

www.elementtreecare.co.uk
info@elementtreecare.co.uk

Free advice and quotations Tel: 01926 883 385

Mobile: 07790 553 110

USEFUL INFORMATION

Weston village hall:

www.westonvillagehall.org.uk

bookings@westonvillagehall.org.uk or 07947 638366

village website : www.westonunderwetherley.parishcouncil.net
(website email westonpcclerk@gmail.com)

Community Transport Scheme Contact Peter Haine: 633153 or email
phaine@btinternet.com

Eathorpe village hall: www.eathorpe.org.uk 633430 or 632664

Hunningham Parish Room: 632852

University Hospitals, Coventry and Warwickshire NHS Trust
(formerly Walsgrave) 024 7696 4000

Warwick Hospital: 495321

Leamington Police Station: 451111

Libraries:

All local libraries now reached on 0300 555 8171;

Weston mobile library every 3rd Friday, St Michaels Close, 9.45-10am

Further info tel 851031

Warwick District Council:

Main line: 410410 or contactus@warwickc.gov.uk

Your neighbourhood (recycling, refuse, parks, lighting): 353365

Council tax and benefits: 353368

Planning: 353367

Your council: 353362

Roads, parking, transport: 353364

Environment: 353361

Business: 353363

Housing: 353366

